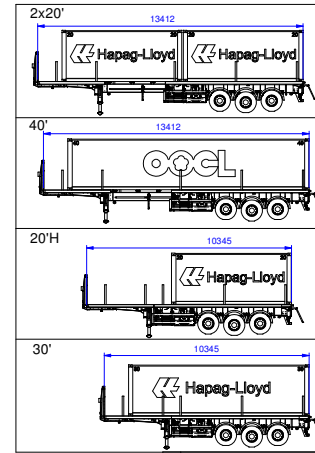
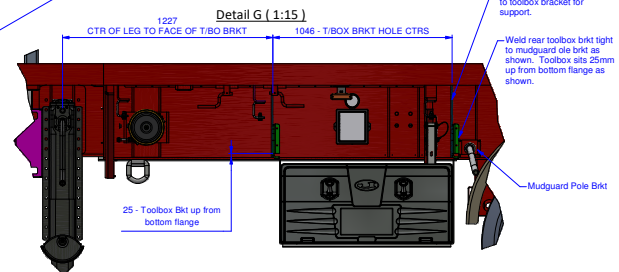
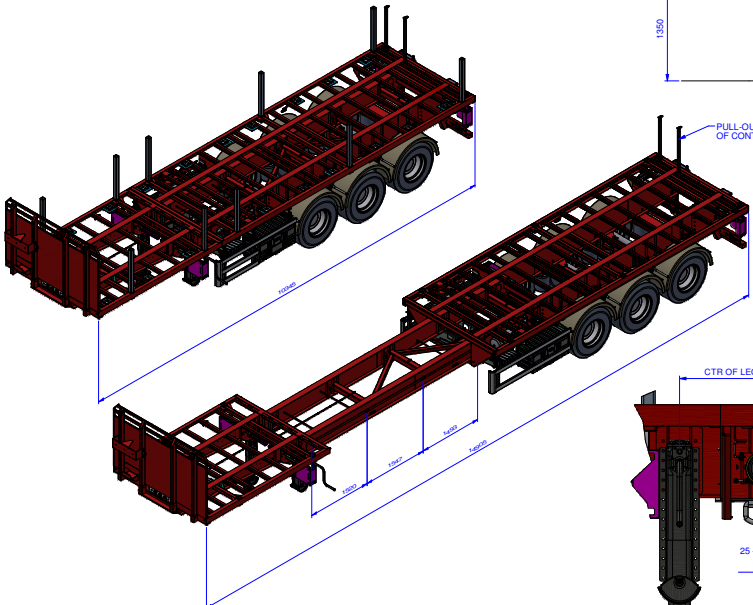
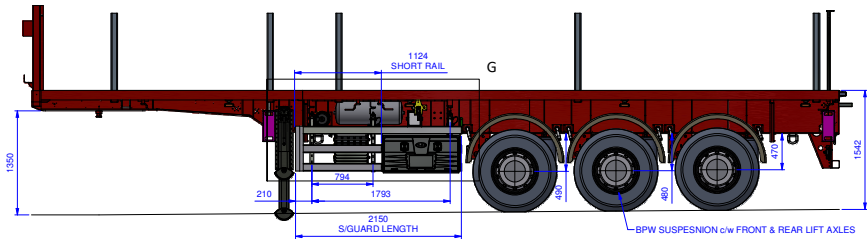
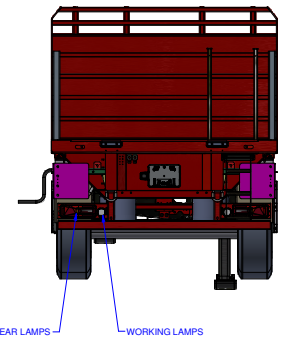
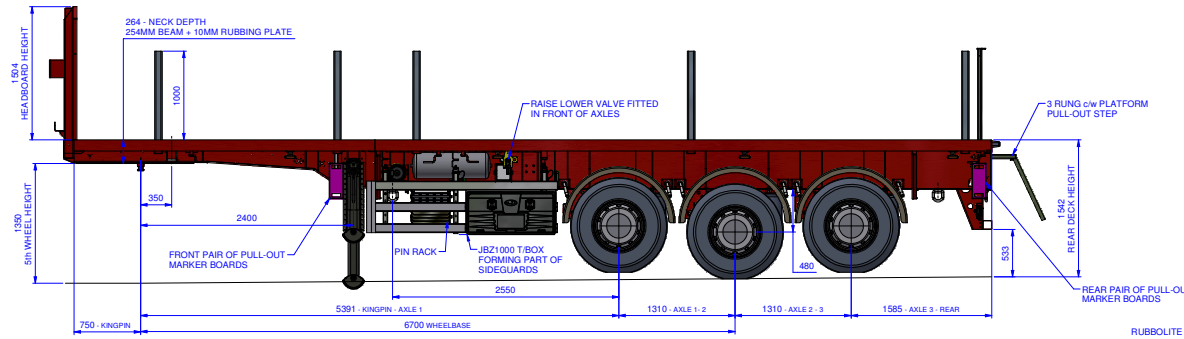
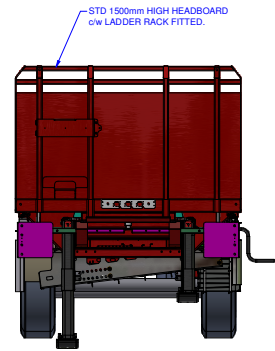
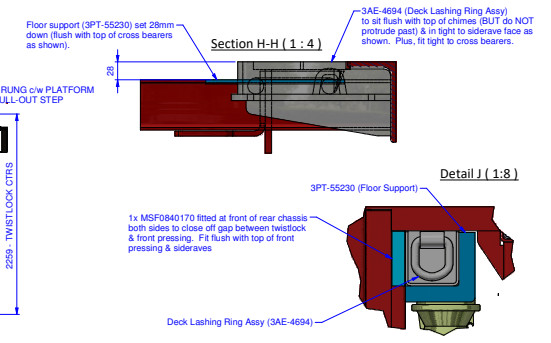
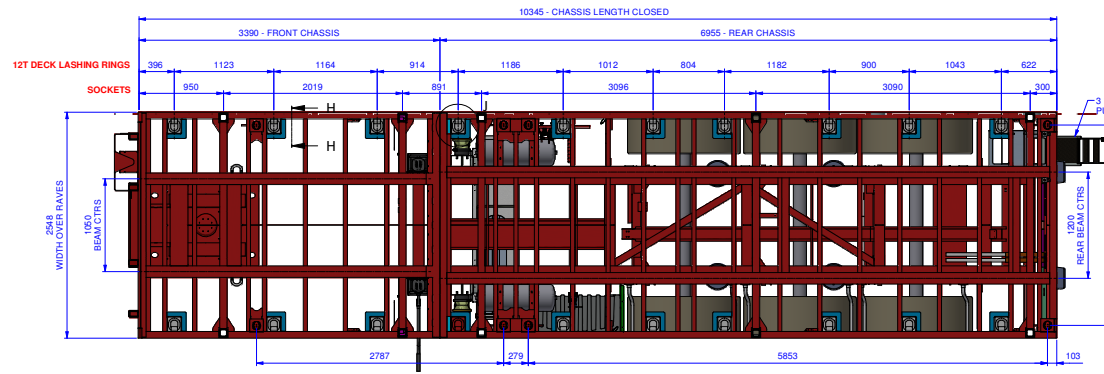




**SDC 10.345 - 14.905M EXTENSIBLE PLATFORM**  
LAYOUT & TECHNICAL INFORMATION SHEET



Attribute	Technical Information	Data
Layout ID		3GA-3277
Front Chassis		3CF-3001
Rear Chassis		3CF-3002
Neck Depth		264mm
Closed Length		10345mm
Fully Opened Length		14905mm
No. of Locking Positions		4
Overall Length (mm) @ Locking Positions 1, 2, 3 etc.		10345, 11865, 13412, 14905
Width		2550mm
Wheelbase		6700mm
Kingpin - Front		750mm
Fifth Wheel Height		1350mm
Axles/Suspension		BPW Airlight II
Rear Steer		NO
Tyre-Wheel Combination		385/65 X R22.5 - 11.75 X R22.5
Beam Wear Strips Fitted (Y/N)		Yes
Beam Bottom Flange		Front: 130mm X 15mm - Rear: 130 X 12mm
Beam Top Flange		Front: 130mm X 12mm - Rear: 130 X 12mm
Side Rave		RSA 125 x 75 x 8
Floor Setdown Distance		28mm
Floor Crossmember Nominal Pitch		450mm
Twistlock Quantities		8
Suits Container Sizes		2x20, 1x40, 1X30, 1X20H
Sockets		Along Raves: 5 Pair (2 Front, 3 Rear deck)
Socket Depth - Orientation		150mm
Chassis Lashing Rings		4 pair
Deck Lashing Rings		10 Pair (12T rated)
Step/3 Points Contact Grab Handles		3 Rung c/w Platform Steo & 3 POC bars.
Buffers		2x 90mm Buffer
Storages		PIN STORAGE & JBZ1000 TOOLBOX & LADDER RACK
Headboard Type (Standard or ENXL or Bespoke)		STANDARD 1500mm c/w LADDER RACK
Miscellaneous information		2 PAIR OF PULL-OUT MARKER BOARDS FITTED.