

dedicated...

TRANSPORT & WAREHOUSING



www.sussextransport.com

Sony DADC

B&W
Bowers & Wilkins

Simplex
LIMITED



WILLMOTT DIXON
CONSTRUCTION

manhattan
FURNITURE FOR KITCHENS

Company Overview

Established as a family business in 1990, Sussex Transport has grown into an exceptional transport company by building and maintaining a reputation for high standards. We offer our clients a comprehensive range of dedicated transport, general haulage, air freight, sea freight and contract warehousing services.

Our aim and overall ethos is total customer satisfaction, achieved by listening to what our customers want and delivering the services they require, in the professional manner which they have come to expect from us.



dedicated...

TRANSPORT & WAREHOUSING

SUSSEX
TRANSPORT

We listen...



dedicated...

TRANSPORT & WAREHOUSING

The logo for Sussex Transport, featuring a stylized purple arrow pointing right above the text "SUSSEX TRANSPORT".

SUSSEX
TRANSPORT

...then deliver



dedicated...

TRANSPORT & WAREHOUSING



Services

- **Dedicated Transport & Haulage Providers**

- Hiab (Crane Assisted)
- Trailer Mounted Forklift (Moffett)
- Artics, Rigids & Low Loaders
- Vans & Couriers
- Full, Part, Wide & Abnormal Loads

- **Warehousing Experts**

- Pick & Pack Fulfilment Solutions
- Contract Warehousing
- Archive & Document Storage

- **Logistics Partners**

- Freight Forwarders
- Road, Air & Sea Expertise
- Import & Export

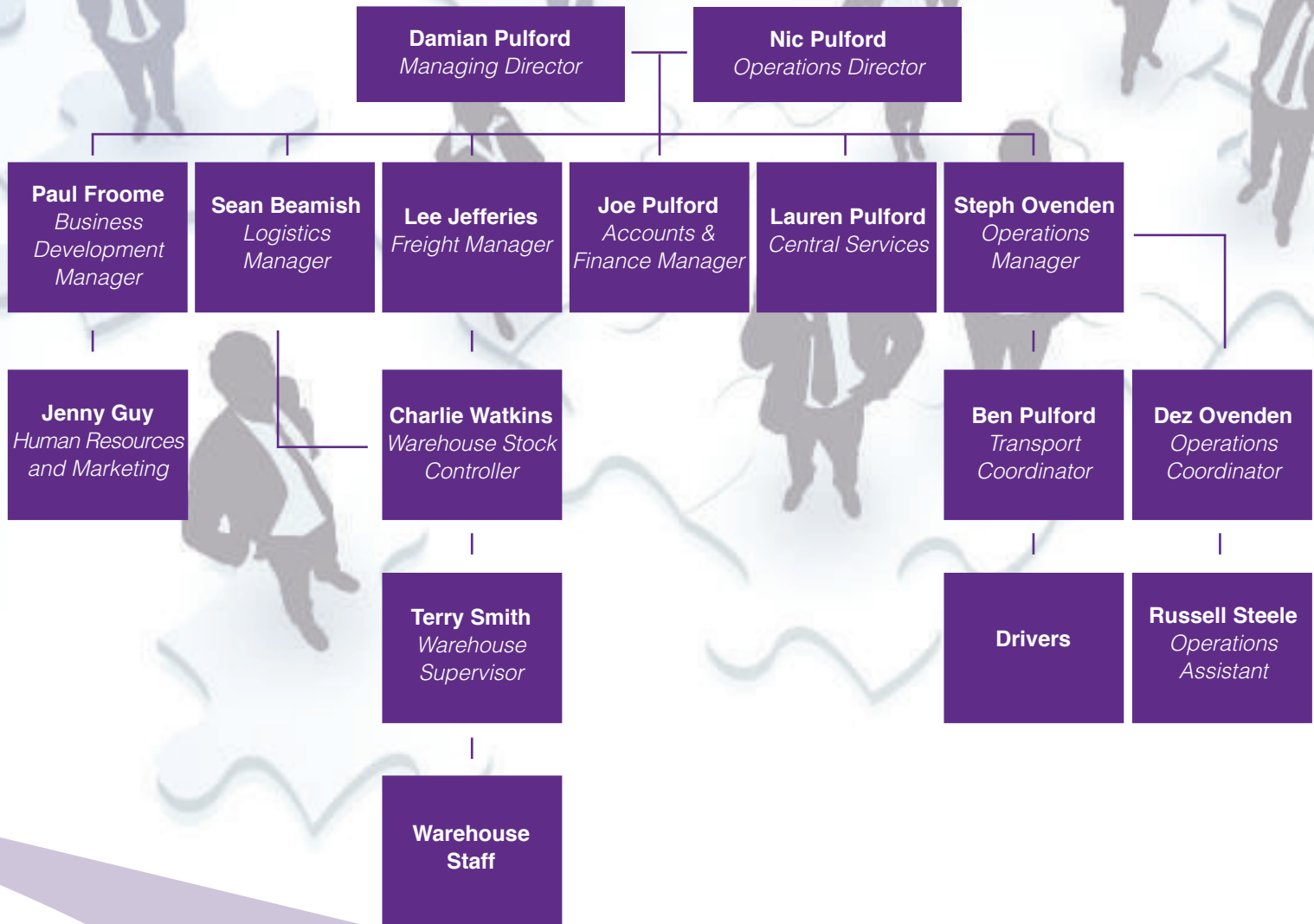


dedicated...

TRANSPORT & WAREHOUSING



Organisation Structure



dedicated...

TRANSPORT & WAREHOUSING

Transport Operations

All in a days work!



- **Deliver 06.00 - Birmingham, Artic**
(Full PPE – Waste carriers license required)
- **Load 07.00 - Littlehampton, 7.5t - London/ Milton Keynes**
(Very fragile load - Customer requires C.O.D.)
- **Deliver 07.00 - Crawley, Artic Flatbed**
(Crane off-load – Return safety loading beams)
- **Deliver 08.00 - Reading, Hiab**
Full PPE – CSCS/ALLMI Card – Lifting certificates required)
- **Deliver 08.00 - London, 7.5t Tail-lift**
(Driver to unload with tail-lift – Pallet truck required)
- **Deliver 08.00 - Manchester, Rigid Hiab**
(Full PPE & glasses - Certificates - Method Statement)
- **Deliver 09.00 - Newcastle, 3.5t Dropside**
(Fragile -Load to be sheeted or netted - do not use straps!)
- **Load 09.00 - Burgess Hill, LWB Van - Winchester**
(I.D required – Vehicle must be tracked and sign-written)
- **Load 09.00 - Gatwick, Rigid Flatbed - Crawley**
(Abnormal load – Attendee & Banksman required)
- **Load 09.30 - Lancing, Luton Van - London x 3**
(Full PPE – CSCS Card – Driver to use customers scanner and return ASAP)
- **Load 09.30 - Brighton, MWB Van - London**
(Two staff - Additional insurance – Vehicle tracked and attended at all times)
- **Load 10.00 - Worthing, 18t - Arundel/Leicester**
(Unload at Arundel - wait 1 hour – re-load & deliver to Leicester)
- **Load 12.00 - Crawley, 18t - Burgess Hill**
(Shunting between sites – Customer to travel in cab – Driver to assist)
- **Deliver 14.00 - St Albans**
10 pallets – Driver must have booking reference & paperwork)
- **Load 16.00 - Lancing, LWB Van**
(Straps & blankets required – Driver to assist loading)
- **Load 19.00 - London, Luton Van - Brighton**
(Unload next day 09.00 – Handball on & off – Wheels required)
- **Load Anytime - Leeds, Artic - Eastbourne**
(Backload – Phone customer 1 hour before arrival)

dedicated...

TRANSPORT & WAREHOUSING

SUSSEX
TRANSPORT

Warehouse Operations

All in a days work!



- **Goods In - 07.30 - 20ft Container**
(Unload by hand - Palletise /Wrap /Log / Put away)
- **Goods In - 09.00 - Luton Van**
(120 boxes of Archiving – Log / Put away)
- **Goods In - 10.00 - Parcel carrier**
(3 boxes of customer goods / Log / Put away)
- **Goods In - 11.00 - Artic**
(26 pallets for storage – Log / Put away)
- **Goods In - 12.00 - 40 ft Container**
(12 Hot-Tubs – Advise customer / Log / Put away)
- **Goods In - 14.00 - 20ft Container**
(Gym equipment – Palletise / Wrap / Log / Put away)
- **Goods In - 14.30 - 1 Pallet**
(Sign as unchecked - Advise customer / Put away)
- **Goods In - 14.30 - 4 Pallets**
(Label & Despatch pallets upon arrival)
- **Goods In - 17.00 - 6 Boxes**
(Customer delivering – Assist unloading / Log / Put away)
- **Goods Out - 07.30 - 2 Pallets**
(Sussex Transport vehicle – Del London)
- **Goods Out - 09.30 - 6 Pallets**
(Customer Collecting)
- **Goods Out - 10.30 - 4 Pallets**
(Sussex Transport vehicle – Secure Destruction)
- **Goods Out - 12.00 - 14 Parcels**
(Pick / Pack / Label boxes – Parcel carrier collecting)
- **Goods Out - 14.00 - 26 Pallets**
(Sussex Transport Artic – Shunt to Burgess Hill)
- **Goods Out - 15.00 - 9 Pallets**
(Various customer orders – Pallet Network deliveries)
- **Goods Out - 15.30 - 21 Parcels**
(Various customer orders – Pick / Pack / Label)
- **Goods Out - 17.00 - 4 Bags**
(Send out 4 Tamper bags – DX Secure Delivery)

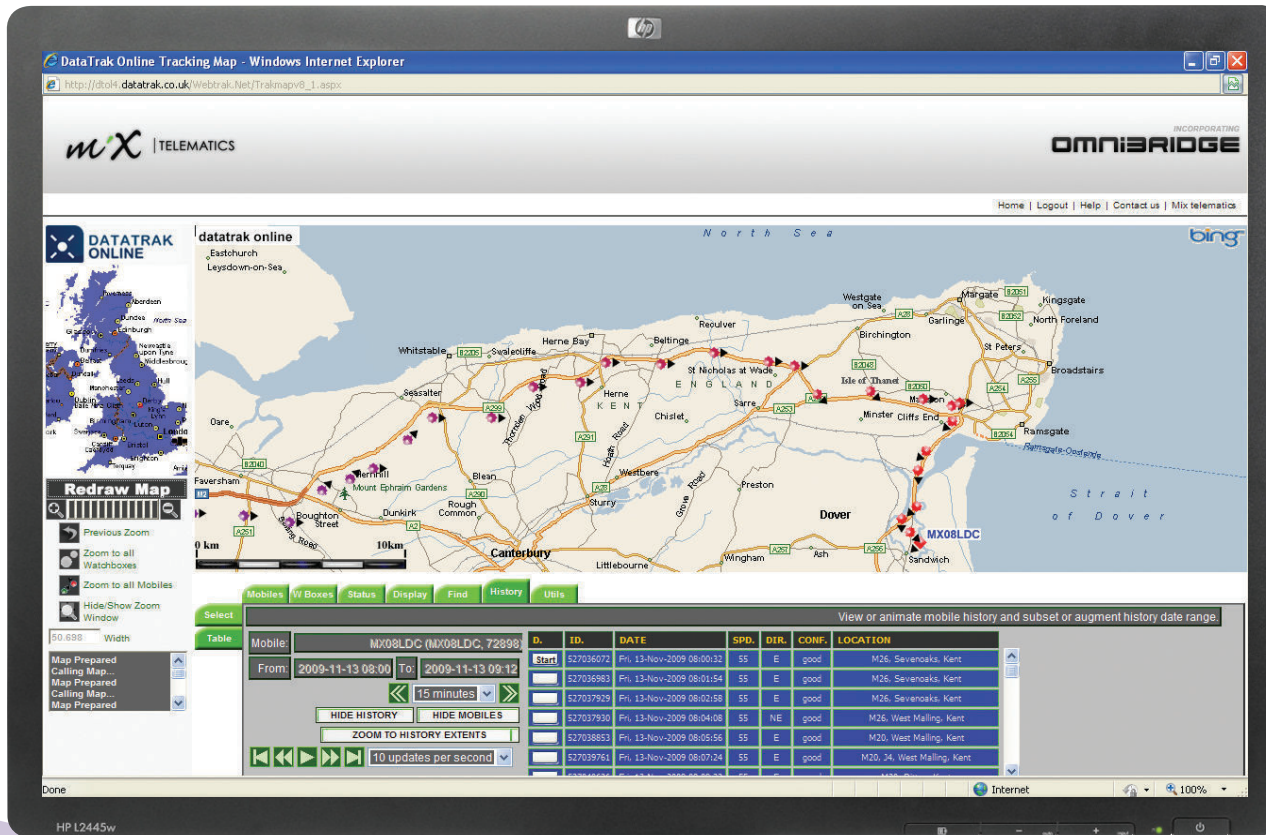
dedicated...

TRANSPORT & WAREHOUSING

SUSSEX
TRANSPORT

Advanced Fleet Management

Our vehicle tracking, supplied by Mix Telematics provides arguably the broadest range of fleet management information available on the market today. It offers real-time track-ability, pinpointing the exact locations of our fleet together with complete trace-ability of the routes and time taken; this together with on-board telecommunications enable greater operational control.



dedicated...

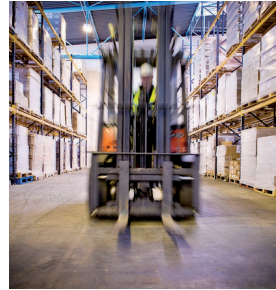
TRANSPORT & WAREHOUSING

SUSSEX
TRANSPORT

Fleet Options



Warehouse



dedicated...
TRANSPORT & WAREHOUSING

SUSSEX
TRANSPORT

Case Studies

B&W

Bowers & Wilkins

B&W Group continues to use partner businesses, with clearly defined SLAs (Service Level Agreements), to meet its transport needs. This policy has proved invaluable in ensuring a 'lean' and 'agile' supply chain. Understanding one another's business and identifying compatible goals ensures co-operation rather than conflict in price and service negotiations.

Sussex Transport (originally LBP) was identified as being able to offer both competitive and compatible services. In addition to quality freight they were able to provide an integrated storage / warehousing operation with FIFO (First-In, First-Out) and good levels of security.

The movement of high value, sensitive and often delicate loudspeakers and equipment requires the skills of a specialist freight company - whilst high volumes, timed deliveries and quick response times requires that of a well organised logistics operation; Sussex Transport have proved, consistently, that they are able to meet both these requirements whilst remaining cost-competitive. B&W have been working with Sussex Transport since 2002 and Sussex Transport is now the 'Preferred Carrier' for high value U.K. contracts.

Steve Marchant (C.I.L.T.)
Warehousing & Logistics
B&W Group Ltd

www.bowers-wilkins.com



In 1999 I was introduced to LBP Storage & Transport, a family business that was beginning to build a reputation locally as a reliable courier. LBP re-branded as Sussex Transport several years ago now and have grown considerably since our first dealings. However, some things haven't changed, their service remains second to none, always managing to accommodate our requests, regardless of short notice or last minute changes in volumes sometimes requiring different or additional vehicles.

Sussex Transport has the ability of supplying clean and tidy vehicles, on time, employing smart, uniformed and courteous drivers – something of a rare breed nowadays!

Sussex Transport supply us with vans / 7.5t / 18t and artic vehicles, they have also provided us with additional warehousing for approximately 200 pallets throughout a particularly busy period.

A company I am very happy to be working with.

Chris Perryman
Despatch & Warehouse Manager
Amerang Group.

www.amerang-group.com

dedicated...

TRANSPORT & WAREHOUSING

The logo for Sussex Transport, featuring a stylized purple arrow pointing right above the words 'SUSSEX' and 'TRANSPORT' in a bold, black, sans-serif font.

SUSSEX
TRANSPORT

Case Studies (Cont)

Sony DADC

I have used Sussex Transport since the appointment of their Operations Manager, Steph Ovenden in 2008. I had previously dealt with Steph for over 6 years in her position as a Transport and Operations Manager and have always been impressed with her professional ability.

Sussex Transport has proved to be a valued supplier offering us excellent levels of service both on and off the road. Sussex Transport has a large fleet of tracked vehicles and has the ability to supply a complete logistics package.

Sussex Transport currently supplies us with dedicated transport, providing vans together with 7.5t / 18t and 44t box and curtain-sided vehicles. They are also able to supply us with stand trailers for additional on site storage throughout our busy periods.

I would happily recommend Sussex Transport as a reliable, trustworthy company.

John Hancock
Senior Manager-Packaging, Warehouse and Despatch
Sony DADC UK Ltd

www.sonydadc.com



We started working with Sussex Transport in 1997 - Damian approached us to see if he could help us out with any transport requirements as he was currently driving one of his two vans with his brother Nic and his father Peter.

Since then, Sussex Transport has become a great asset to our company, Simplex, enabling us to concentrate on what we do best - manufacturing signs and sign systems to the trade. When we have completed a customer order we place our goods in Sussex Transport's hands, knowing that every effort will be taken to ensure the delivery is on time and without damage.

Sussex Transport supply us with a dedicated service supplying vans, 7.5t & 18t vehicles for our fragile signage together with hiab / crane assisted vehicles for our pylons and monoliths. They also offer us a part-load service and the ability of storing goods if our deliveries get deferred.

In short, I would thoroughly recommend Sussex Transport to anyone who has a transport requirement.

Andy Thorne,
Managing Director
Simplex Ltd

www.simplexltd.com

dedicated...

TRANSPORT & WAREHOUSING

The Sussex Transport logo, featuring a stylized purple arrow pointing to the right, above the words "SUSSEX" and "TRANSPORT" in a bold, black, sans-serif font.

SUSSEX
TRANSPORT

Case Studies (Cont)

H & A Nader

We are importers of premium food and wines from the Lebanon. We have been working with Sussex Transport since 2006.

Our products arrive in cases on a shipping container, we therefore require assistance in offloading these boxes by hand, checking the condition, quantities and product type. When this has been done our goods are placed on pallets, wrapped and fork lifted onto pallet racks and entered onto a stock control system.

Sussex Transport has proved to be a very reliable, trustworthy and friendly family business and their flexibility allows us to use their staff and facilities on a pay as you go basis.

We enjoy working with these people and would thoroughly recommend them.

Hafez Nader
H & A Nader
Lebanese Fine Foods and Wines



As a Senior Buyer, I like to work with companies that understand our industry, our business and our procedures.

They must operate professionally from start to finish; good communication, supplier processes & procedures and compliance are all paramount.

Sussex Transport has supplied Rydon Construction with General Haulage and Hiab / Lorry mounted crane services since 2007. They assist us in the movement of site accommodation & furniture, heras fencing, tipping-skips, road plates, safety airbags and other materials.

Sussex Transport also provides me with a flexible and competitive service. I like to work with this company!

Chris Snowsill
Senior Buyer
Rydon Construction.

www.rydon.co.uk

dedicated...

TRANSPORT & WAREHOUSING



Case Studies (Cont)



Allenwest Brighton

Allenwest Brighton Ltd is a well-established design and systems manufacturer of Industrial Electrical Control Equipment.

The equipment we manufacture is generally both high value and fragile. Once our company has completed the manufacturing process it is time to schedule the delivery and installation, we need to use a transport company that genuinely understands that our reputation is now in their hands.

In 2008 we started working with Sussex Transport; they assist us in the movement, storage and installation of our electrical cabinets. They regularly supply us with tail-lift and crane assisted haulage, providing us with a high standard of vehicle together with uniformed drivers that are both friendly and well trained.

Sussex Transport is an efficient and professional company that offers us an excellent service from start to finish - they look after our business!

Allenwest Brighton Ltd
Dave McFarlane
Sales Director & Company Secretary

dave.mcfarlane@allenwestbrighton.co.uk
www.allenwestbrighton.co.uk



Graham Wood Structural Ltd is one of the countries leading Structural Steel Fabrication and Erection Companies. We fabricate and erect a wide range of structures across many sectors, including leisure, residential, commercial and health care.

We have been working with Sussex Transport for over 10 years; they supply us with Flatbed / Hiab / Van and Abnormal Load transportation, moving our steel all around the country.

Sussex Transport are experienced within the construction industry, they are aware of site processes & procedures and have shown to be proactive in obtaining CSCS / ALLMI and Safecontractor accreditations, these qualifications benefit not only us but our main contractors too!

Sussex Transport is a family business which is shown in their flexible approach to delays, cancellations and changes in plan – something that is inevitable within our industry but not always as easily accepted.

I would have no hesitation in recommending Sussex Transport; in fact we have recommended them on numerous occasions!

Graham Wood Structural
Gregor Hunter – Operations Director

g.hunter@grahamwoodstructural.co.uk
www.grahamwoodstructural.co.uk

dedicated...

TRANSPORT & WAREHOUSING





www.sussextransport.com

01903 751100

Follow us on:



I hope we can work together?



Lloyds TSB

PAREXEL

PRIORY



ESCHMANN